



# Installation Instructions

## Style Bar

**FOR MIATA 1990-2005**

PART # 903-300, 903-305 & 903-310

**MOSS MOTORS, LTD.**

440 Rutherford St. P.O. Box 847 Goleta, CA 93117  
1-800-642-8295 • FAX 805-692-2525 • www.miatamania.com

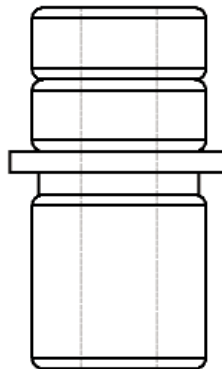
Tools required: 17 mm (1999-2002) and 16mm or 5/8" (1990-1993) socket, ratchet and torque wrench.

NOTE: This is a styling item, which is not intended to provide rollover protection.

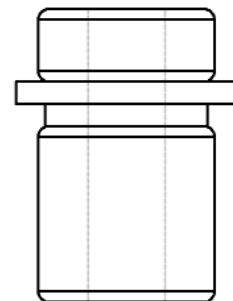
**1.** Flip both seats forward, and remove the windscreen if applicable (Please note, this product may not fit with a windscreen). Remove the seat belt guide bracket cover gently. Remove the seatbelt mounting bolt, place the bracket aside, and remove all the spacers. Do this on both sides of the car. (See Illustration 1)



**2.** Install the lower spacers on both sides of the car per drawing:



**1990-1997:**  
Large spacer and washer below the style bar, and 2 medium spacers above.



**1999-2002:**  
Large spacer and washer below the style bar, and 1 medium spacer above.

**3.** Next, carefully set the Style Bar on your car. Hold it in place while you set the proper number of spacers on top of the style bar, stick the bolt through the seat belt guide bracket, (you may want to put some anti-seize on the end of the threads) and install the bolt finger tight. Install the other bolt the same way and torque it to 45 lb-ft. Then tighten the first bolt to 45 lb-ft. (See Illustration 3 on next page)

# Style Bar Installation Instructions

---



4. Re-install the seat belt guide bracket covers, and enjoy your Style Bar. (See Illustration 4)

